



The ANCHOR

Volume 11, Issue 2
FEBRUARY 2011

The Official Publication of the Marina West Yacht Club, 14900 W. Hwy. 12 at Tower Park, Lodi, CA



From the Commodore, Ken Dretzka

The Marina West Yacht Club's Change of Watch for 2011 took place on the second weekend of January and once again in our "new" Club House at Tower Park. Can you believe that we have already been here a year?! Our "Chair" for this event, Lynn Hahn, put it on and once again out did herself. Her selection for food preparer brought us one who could be a real Chef if he wanted to...Mr. John Romero of Oxbow Yacht Club. What a meal he prepared! From a fantastic creamy minestrone soup to a great Tri-Tip with roasted red potatoes...WOW! More cheese cake than we could eat followed for dessert. After dinner the COW Ceremony began with a pledge of allegiance led by Ben Penn and an invocation from Joe Pustizzi that was truly awe inspiring. Our 2011 Officers were then dutifully installed, our Directors, Fleet Captains and Chairs were acknowledged and every-

one appeared to be pretty happy to get 2011 officially underway. The only hang up came from your "new" Commodore who became tongue tied during his swear in of his Officers. You would have thought he had enough practice by now. (It's hard to say solemnly)

Our 2011 calendar looks to be very full and exciting. Fun will most certainly be involved too but mixed in will be a lot of hard work. We still have a number of things that need to come together in order for our Club to grow and get stronger. Your help and participation in our activities this year will definitely be helpful in making this happen.

I'm really looking forward to serving as your Commodore once again. With your help the third time will be the charm!



From the Vice Commodore Ron Harper

Ahoy from the Vice!

Uniforms are not my favorite & writing articles ranks about the same. Oh well, THEY never told me about those things til they got me committed to the job!

The new year is shaping up good for the club. We have 9 cruise- ins already paid & another 6 scheduled. Looking over the calendar, there are still at least 6 weekends unscheduled so far for cruise- ins. Look at the calendar & contact me if you have a specific club you would like us to

invite. Remember, this is where the club makes money! Think Galley & bathroom needs.

We are going to welcome Mark & Jane McIntyre from Simi Valley into membership in Feb & Dave & Betty Gro-towhol's application has just been posted. Good news, we are growing.

See you soon if the creek don't rise

What's Inside

Report from the Rear Acting Port Captain
Pg. 3

New Members Bio
Pg. 4

PICYA Report
RBOC Report
Pg. 5

Safety Officer's Report
Pg. 6 & 7

Phoenix Report
Event Photos
Pg. 8 & 9

Club Calendars
Pg. 10 & 11

The ANCHOR
Is now available
Electronically.

If you received this through the mail, it means we don't have your e-mail address. Please e-mail Mary Lee Michael @ belpassidr@sbcglobal.



IMPORTANT PHONE NUMBERS

EMERGENCY..... 911

Contact #(Message phone) (209) 477-7653

Commodore..... Ken Dretzka
 Home (707)-693-1665
 Business (707)-322-4908

Club & Bar Manager..... Jeff Rose
 Cell (209) 483-5218

Port Captain (Acting).....Ed Stetson
 Home (209) 992-8073
 Cell (209) 670-5220

The Anchor Editor.....Mary Lee Michael
 (209) 523-7750
 E-Mail: belpassidr@sbcglobal.net

Webmaster.....Ken Dretzka
 Commodore

Sunshine.....Mary Lee Michael

OFFICERS & COMMITTEE CHAIRS

Commodore:
 Ken Dretzka

Vice Commodore:
 Ron Harper

Rear Commodore:
 Cliff Hahn

Jr. Staff Commodore:
 Ed Stetson

Directors:
 Jeff Rose
 Bonnie Stetson

Secretary:
 Judy Dretzka

Treasurer:
 Lynn Hahn

Parliamentarian:
 Jack Michael

PICYA Delegates:
 Ed Stetson, Jack Michael, Linda Breninger

RBOC Delegate:
 Jack Michael

Blue Gavel Dist. 19
 Jack Michael

Club Manager:
 Jeff Rose

Safety Officer:
 Ed Stetson

Supply Officer:
 Christy Mc Cray

Sunshine Committee: Mary Lee Michael

Fleet Captains:
 Ken & Judy Dretzka; Lynn & Cliff Hahn;
 Jack & Judy McCarty; Ron Harper
 Ed & Bonnie Stetson; Jack & Mary Lee Michael

APPLICATIONS FOR MEMBERSHIP

For more information about
 Marina West Yacht Club
 & application forms
 please contact:

Ron Harper
 Vice Commodore
 Cell Ph: (209)-969-0364

E-mail: docman444@yahoo.com



Rear Commodore, Cliff Hahn

Greetings from your Rear Commodore!

Since I know you will all really try hard to keep your New Years Resolution, one more reminder on what the NYR is: You promise to call or e-mail Lynn your reservations for every General Membership Meeting this year.

That being said, the next General Meeting is February 18, 2011. We may have a few guests as The Sea Ray Club of Northern California is cruising in that weekend.

Dinner will be \$12.50 per person and will be Soup, Salad, Bread & Dessert, and my personal guarantee it will be delicious. Send in your reservation, we will collect your money at the door.

Looking forward to hearing from you and to seeing your smiling face on February 18th.

Cliff Hahn

BIRTHDAYS

FEBRUARY

- 4 Don De la Riva
- 4 Carol De la Riva
- 9 Cliff Hahn
- 16 Jack Michael
- 16 Jennifer Bartolo
- 24 Georgiana Thomas
- 26 Nancy Halsne



Acting Port Captain, Ed Stetson

The Yacht Club Docks are Almost always available for members use. The Valentines weekend cruise in by Ox-bow YC and Driftwood YC is an exception. They will fill our docks. Additionally, IOBG may be bringing in boats for the Induction of new members on Sunday. If you want to bring your boat for the weekend, we can arrange docking at the marina.

It is important that you contact the Port Captain by email ed.griffin@yahoo.com , or by phone at 209 992-8073 if you are going to bring your boat so we can make sure we have adequate docking. I would hate to turn a member away. Remember, the visiting club and their hosts have priority on our docks.



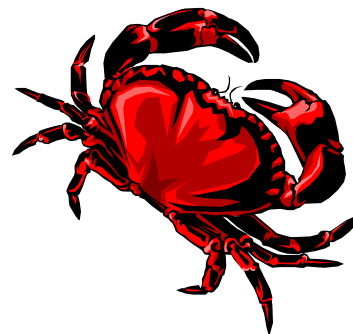
FEBRUARY 5TH

MWYC CRAB FEED

DON'T MISS THE BEST CRAB FEED ON THE DELTA

TICKETS \$40

We can only accommodate 200 people so, first come first served!!





Change of Watch Photos and Newest Member Biography



Ken Dretzka Commodore 2011 & Ed Stetson, Jr. Staff Commodore



Incoming 2011 Board



Congratulations Ken! Third Time Commodore!!!



Newest Members Jane & Michael McIntyre

We are both retired from long standing jobs in civil service. Mike worked with the L.A. Dept. of Water & Power for 38 years. Jane was employed for 32 years at Calif. State University Northridge. We have one daughter, married and residing in Redmond, Washington. Grandkids are just (very) wishful thinking at the moment, but we do have two cute granddoggies!

Married for 36 years, we have a long history with pleasure boating. Mike's experience as a kid with his parents boats has always been in his blood, and both of us have been water-skiing since our teens.

Our first ski boat was purchased in 1975, and we have not gone without a floating vessel since. Our boating enjoyment also includes two Seadoo jet skis. And, an occasional motorcycle ride on our full dress touring bike is also something we enjoy.

For more than 20 years, we were in a water ski and boat club that vacationed as a group at the Tower Park campground each year. The delta quickly became our home away from home, and we feel there are no other waterways to be matched for relaxation and enjoying our boats. We were fortunate to purchase a vacation home in the Tower Park Village last year, where we plan to spend a lot of our time in retirement. Hence.....we both look forward to lots of fun times with the MWYC!

Mike and Jane

To all our new members. . . Please send your Biography to The ANCHOR Editor Mary Lee Michael belpassidr@sbcglobal.net or to Bel Passi Dr. Modesto, CA 95350



P.I.C.Y.A. Report—Jack Michael, SC—Delegate

Several MWYC members will be attending the PICYA Commodore's Ball and Installation of Officers at the Double Tree Hotel at Berkeley Marina likely about the time you are reading this report! Linda Breninger is being installed as Commodore, Ed Stetson as Sgt.-At-Arms and yours truly is serving as Master of Ceremonies. The Stetsons, Breningers and I will be attending the first Delegates Meeting of the year at Coyote Point Yacht Club on February 7. The March Meeting will be on Monday, the 7th, at Half Moon Bay YC. It is a ways to travel, but they have a new club house which you may want to see! Let me know if you would like to attend so we can make reservations!

The PICYA Leadership Conference will be on Saturday, February 26, 2011 at the Golden Gate YC. We had a great turn-

out for the Management Conference last spring and I strongly encourage our officers to attend this Leadership Conference. I fully expect this conference to be better than the past, and hopefully we'll get to view the America's Cup Trophy up close!! Please contact Lynn Hahn to let her know you will be attending so she can get your reservations sent in. The registration forms are on the PICYA Website at www.picya.org.

I'll have more to report in my report next month!

R.B.O.C. Report, Jack Michael SC, R.B.O.C. Director

I attended the RBOC Board of Directors Meeting at the California Yacht Club in Marina Del Rey last week. The meeting was very productive, as usual. Linda Bendsen, Staff Commodore of Delta Marina YC was installed as 2011 RBOC President; Cleve Hardaker, Staff Commodore of Silver Gate YC in San Diego as 2011 Vice President-South, and yours truly as 2011 VP-North.

RBOC will NOT be sponsoring the "Vessel Operator Certification Program" legislation this Session because of the continuing, dire budget issues the Legislature is facing. Not a good time to try to get a new program approved! Our primary focus will again be on working to assure that our boater's money is not ripped off for none boating related purposes. The deadline for introduction of legislation is next month, so I will have more to report on specific bills in my coming reports.

We are pleased that the Governor appointed John Laird as Secretary of the Resources Agency. Most of the issues of interest to RBOC are connected in some way to the Resources Agency, and Secretary Laird is a former Assembly Member and good friend of a couple of our Directors and our lobbyists, the Desmonds. Northern Directors are busy covering the various public meetings regarding the planning efforts underway to achieve the co-equal goals of restoring and improving the Delta and the State's water resources. I will be reporting on these efforts in future reports as well.

It looks like another busy year so any additional donations to RBOC, beyond the \$10 assessment you were already supposed to pay with your dues, will be appreciated and put to good use.

I will do my best to keep you up to date on the issues that will be most important to you, and ask that you keep me current on your concerns. Please stay tuned!

Sunshine Report

Former member, Fred Schmietow, had major back surgery on January 24th. We wish him well and a speedy recovery.

Another former member Sharon Page had a Pacer/Defibrillator (sp?) implanted last week. She is home and doing well also.

We do miss all of our former members!

All of our current members are doing well.

Mary Lee Michael, Sunshine Reporter. . . .





Monthly Safety Tips/Reminders—Safety Officer, Ed Stetson

Safety – By Ed Stetson

Understanding tides and currents will make you a safer skipper.

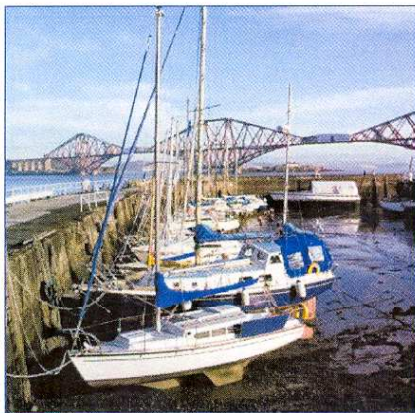
To Understand Tides, Think Gravity

There Are Tide Tables and Current Tables, But First Consider the Moon and the Sun

By Gene Bjerke

Updated January 15, 2008

People who live in coastal communities are familiar with the clock-like rise and fall of the waters. It's regular and predictable. The times of high and low water advance about 50 minutes each day, rising and falling in a rhythmic pattern. The basic mechanics are simple, but variations in the shape of different coasts make the results very different.



THE SUN AND MOON

The vertical movement of water we call the tide is created by the gravitational pull of the moon and the sun. While the moon is much smaller than the sun, it is a great deal closer to the Earth and thus becomes a controlling force. Typically, a given area will experience high tide when the moon is on a certain bearing.

Both the sun and the moon affect the rising of the waters. When the sun and moon are lined up (during a new moon and full moon), their effect is cumulative, causing water to rise higher and fall lower than average. These are called *spring tides* and they have nothing to do with the season, as evidenced by the fact they occur every two weeks. When the sun and moon are at right angles (sometimes called "at the quarters") their total effect is less and the tidal range

(the difference between high and low) is less. High tide is not as high and low tide is not as low. These are called *neap tides*.

The distance between the moon and the earth also varies. When the moon is closest to the earth it is said to be in *perigee* and tidal ranges are greater. When the moon is in its farthest position it is in *apogee*, and tidal ranges are less.

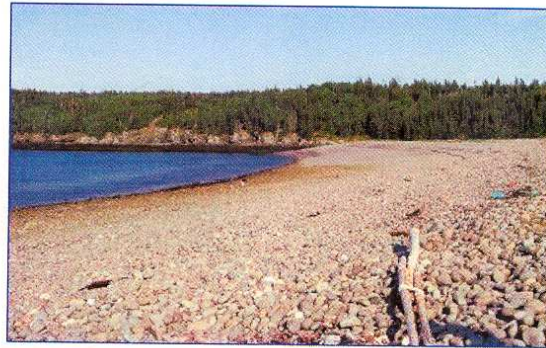
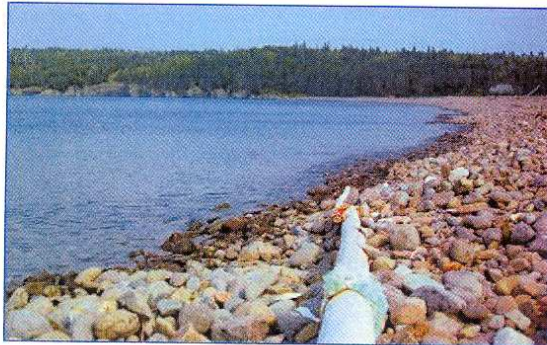
If the perigee coincides with a new or full moon, high tides will be very high. Add an onshore storm to that and you have a recipe for coastal flooding.

HIGH AND LOW TIDES

Most, but not all, places experience two high tides, and two low tides, every day. It is reasonable that the tide is high when the moon is in sight. But what about the other tide? Gravitational attraction produces a "lump" of water that goes around the world under the moon. On the opposite side of the earth is another lump created by the centrifugal force of the earth and moon rotating around their common center of mass (about 1,100 miles below the earth's surface).

Usually the two daily tides are not exactly the same height. In some cases the difference is quite noticeable. Chart depths will be noted as either "Mean Low Water" or "Mean Lower Low Water." "Mean," in this case, is a mathematical term that means "average." During an extreme spring tide, the water may be lower than charted, so you need to pay attention to the tide tables.

Tide tables are commonly available just about everywhere. Simple ones are often given away in bait shops. Most chandleries sell tide tables in book form. And many navigational software packages have tide information. These tables show a more complete set of tidal predictions. They give detailed predictions for a limited number of reference stations and offsets (both for time and height) for a great number of subordinate stations. The depths indicated are relative to the chart datum (usually mean lower low water), thus a negative depth (such as -0.3 feet) tells you that at low tide there will be less water than what is shown on the chart.



JAN VERTEFEUILLE Grand Manan Island, at the mouth of the Bay of Fundy, experiences tidal variations as great as 50 feet during each cycle. Shown is a high and low tide view of Whale Cove on the island's north end.

Most tide books provide a table to calculate the depths for any time between those tabulated, but a good rule of thumb is that the tide will rise or fall one-twelfth in the first hour, two-twelfths in the second hour, three-twelfths in the third and fourth hours, two-twelfths in the fifth hour, and one-twelfth in the last hour of the cycle.

COAST LINE

Tide times and ranges will vary greatly from place to place. This is due to the way the shape of the land affects the incoming water. For example, the North Carolina sounds, which have a huge area of water fed by just a few small inlets, have a tidal range of just a couple of inches, while further north, at the Bay of Fundy, a unique and complicated set of conditions produces tidal ranges of more than 40 feet.

Remember that tide predictions are based on the regular movements of the sun and moon. The actual tidal variation may vary from the predictions due to strong and continued winds, extremes of barometric pressure or heavy runoff from rivers. In most cases the tide tables will be accurate, but be aware of other factors that can modify the predictions.

TIDAL CURRENTS

A rising tide, pushing up bays and coastal rivers, creates a current that flows upstream. It is called the *flood*. The tidal portion of rivers actually reverses their flow four times a day. As the tide goes down again, there is a current flowing toward the sea called the *ebb*. In a river that has a current of its own, the ebb is often stronger than the flood.

Like the tide itself, these currents are affected by local topography. It would be a mistake to try to guess the time and strength of a tidal current by the state or height of the tide. Floods and ebbs don't necessarily coincide with rising and dropping tides. For example, the presence of a point of land that causes a restriction in Virginia's York River creates a situation in which the currents are three hours out of sync with the tides. You can be riding a flood current a couple of hours after the tide has started to fall.

As the tide moves up a river or a long bay, the area of flooding current moves up with it. Thus, a boat that can maintain the appropriate speed will be able to ride the flood for a long time. For example, if you can maintain a speed of at least 10 knots you can ride the flood all the way up Chesapeake Bay from Cape Henry to Baltimore.

There are tidal current tables just as there are tide tables. They will give predictions for the times of slack water between the floods and ebbs, and give you the speed and direction of maximum currents. They are organized similarly to the tide tables. They usually also include a table for calculating the speed of the current at any time in the cycle. This information is very useful, but it refers only to the currents created by the tides. As with the tide itself, currents can be affected by strong winds, river runoff and other temporary factors, so you need to use your skipper's judgment.



Dedicated to Restoring M.W.Y.C. to it's Status as one of the Finest Yacht Clubs in the Delta.

Members

Jeff Rose, Ken Dretzka, Ron Harper, Ben Penn, Chair Ed Stetson

We are going slow as we await an infusion of operation capital. And, to find out if the Showroom is going to be rented, including the restroom.

We did get the dishes and serving utensils moved into the new cabinets in the Dining Room. That and completing the built in cupboard in the galley, thanks Candy, really opened up that area. Prep and cooking will be much more convenient. Also, by the time you read this, the counter for the pass-through window will be completed.

Thanks to everyone that has helped with the projects we have completed.

Ed Stetson
Chair

More Change of Watch Photo Opportunities



Lynn Hahn received a Santa to add to her collection of over 100 Santa's. . . In recognition of her Chairmanship of the 31st Annual Delta Reflections Lighted Boat Parade! Great Job as usual Lynn.



Rear Commodore Cliff Hahn recognized Georgia and John Field for their assistance throughout the year!



Change of Watch Photos



Swearing in of Ron Harper Vice Commodore and Judy Dretzka, Secretary



Lynn Hahn gets well deserved praise plus she is Incoming Treasurer again!



Commodore Ken being sworn in by Ed Stetson, Jr. Staff Commodore



Jack & Mary Lee Michael helped with an event or two.



Treas. Lynn, Rear Commodore Cliff, & Ed Stetson Jr. Staff Commodore










Rear Commodore Cliff Hahn thanks Bonnie & Ed Stetson for their help during the year.



February 2011

Marina West Yacht Club

| Sunday | Monday | Tuesday | Wednesday | Thursday | Friday | Saturday | | | | | | | | | | | | | | | | | | | | | | | | | | | | | | | | | | | | | | | | | | | | | | | | | | | | | | | | | | | | | | | | | | | | | | | | | | | | | | | | | | | | | | | | | | | |
|---|--|--|--------------------|----------|---|---|---|---|---|---|--|--|--|--|--|--|---|---|---|---|---|---|---|---|---|----|----|----|----|----|----|----|----|----|----|----|----|----|----|----|----|----|----|----|----|----|----|--|--|--|--|--|--|--|---|---|---|---|---|---|---|--|--|--|---|---|---|---|---|---|---|---|---|----|----|----|----|----|----|----|----|----|----|----|----|----|----|----|----|----|----|----|----|----|----|--|--|
| | | 1 | 2 Groundhog Day | 3 | 4 | 5  Crab Feed | | | | | | | | | | | | | | | | | | | | | | | | | | | | | | | | | | | | | | | | | | | | | | | | | | | | | | | | | | | | | | | | | | | | | | | | | | | | | | | | | | | | | | | | | | | |
| 6  Superbowl Party | 7  Delegates Dinner Cayote Point YC | 8 | 9 | 10 | 11  Oxbow & Driftwood YC Cruise In | 12 Wine & Chocolate Fest Lincoln's Birthday Oxbow & Driftwood YC Cruise In | | | | | | | | | | | | | | | | | | | | | | | | | | | | | | | | | | | | | | | | | | | | | | | | | | | | | | | | | | | | | | | | | | | | | | | | | | | | | | | | | | | | | | | | | | | |
| 13  Oxbow & Driftwood YC Cruise In | 14 Valentine's Day | 15 | 16 | 17 | 18  Board & General Meeting Sea Ray Cruise In | 19 | | | | | | | | | | | | | | | | | | | | | | | | | | | | | | | | | | | | | | | | | | | | | | | | | | | | | | | | | | | | | | | | | | | | | | | | | | | | | | | | | | | | | | | | | | | |
| 20 Sea Ray Cruise In | 21 President's Day | 22 | 23 | 24 | 25 | 26  Leadership Conference Golden Gate YC | | | | | | | | | | | | | | | | | | | | | | | | | | | | | | | | | | | | | | | | | | | | | | | | | | | | | | | | | | | | | | | | | | | | | | | | | | | | | | | | | | | | | | | | | | | |
| 27 | 28 | <table border="1"> <caption>Jan 2011</caption> <thead> <tr><th>S</th><th>M</th><th>T</th><th>W</th><th>T</th><th>F</th><th>S</th></tr> </thead> <tbody> <tr><td></td><td></td><td></td><td></td><td></td><td></td><td>1</td></tr> <tr><td>2</td><td>3</td><td>4</td><td>5</td><td>6</td><td>7</td><td>8</td></tr> <tr><td>9</td><td>10</td><td>11</td><td>12</td><td>13</td><td>14</td><td>15</td></tr> <tr><td>16</td><td>17</td><td>18</td><td>19</td><td>20</td><td>21</td><td>22</td></tr> <tr><td>23</td><td>24</td><td>25</td><td>26</td><td>27</td><td>28</td><td>29</td></tr> <tr><td>30</td><td>31</td><td></td><td></td><td></td><td></td><td></td></tr> </tbody> </table> | | S | M | T | W | T | F | S | | | | | | | 1 | 2 | 3 | 4 | 5 | 6 | 7 | 8 | 9 | 10 | 11 | 12 | 13 | 14 | 15 | 16 | 17 | 18 | 19 | 20 | 21 | 22 | 23 | 24 | 25 | 26 | 27 | 28 | 29 | 30 | 31 | | | | | | <table border="1"> <caption>Mar 2011</caption> <thead> <tr><th>S</th><th>M</th><th>T</th><th>W</th><th>T</th><th>F</th><th>S</th></tr> </thead> <tbody> <tr><td></td><td></td><td></td><td>1</td><td>2</td><td>3</td><td>4</td><td>5</td></tr> <tr><td>6</td><td>7</td><td>8</td><td>9</td><td>10</td><td>11</td><td>12</td></tr> <tr><td>13</td><td>14</td><td>15</td><td>16</td><td>17</td><td>18</td><td>19</td></tr> <tr><td>20</td><td>21</td><td>22</td><td>23</td><td>24</td><td>25</td><td>26</td></tr> <tr><td>27</td><td>28</td><td>29</td><td>30</td><td>31</td><td></td><td></td></tr> </tbody> </table> | | S | M | T | W | T | F | S | | | | 1 | 2 | 3 | 4 | 5 | 6 | 7 | 8 | 9 | 10 | 11 | 12 | 13 | 14 | 15 | 16 | 17 | 18 | 19 | 20 | 21 | 22 | 23 | 24 | 25 | 26 | 27 | 28 | 29 | 30 | 31 | | |
| S | M | T | W | T | F | S | | | | | | | | | | | | | | | | | | | | | | | | | | | | | | | | | | | | | | | | | | | | | | | | | | | | | | | | | | | | | | | | | | | | | | | | | | | | | | | | | | | | | | | | | | | |
| | | | | | | 1 | | | | | | | | | | | | | | | | | | | | | | | | | | | | | | | | | | | | | | | | | | | | | | | | | | | | | | | | | | | | | | | | | | | | | | | | | | | | | | | | | | | | | | | | | | | |
| 2 | 3 | 4 | 5 | 6 | 7 | 8 | | | | | | | | | | | | | | | | | | | | | | | | | | | | | | | | | | | | | | | | | | | | | | | | | | | | | | | | | | | | | | | | | | | | | | | | | | | | | | | | | | | | | | | | | | | |
| 9 | 10 | 11 | 12 | 13 | 14 | 15 | | | | | | | | | | | | | | | | | | | | | | | | | | | | | | | | | | | | | | | | | | | | | | | | | | | | | | | | | | | | | | | | | | | | | | | | | | | | | | | | | | | | | | | | | | | |
| 16 | 17 | 18 | 19 | 20 | 21 | 22 | | | | | | | | | | | | | | | | | | | | | | | | | | | | | | | | | | | | | | | | | | | | | | | | | | | | | | | | | | | | | | | | | | | | | | | | | | | | | | | | | | | | | | | | | | | |
| 23 | 24 | 25 | 26 | 27 | 28 | 29 | | | | | | | | | | | | | | | | | | | | | | | | | | | | | | | | | | | | | | | | | | | | | | | | | | | | | | | | | | | | | | | | | | | | | | | | | | | | | | | | | | | | | | | | | | | |
| 30 | 31 | | | | | | | | | | | | | | | | | | | | | | | | | | | | | | | | | | | | | | | | | | | | | | | | | | | | | | | | | | | | | | | | | | | | | | | | | | | | | | | | | | | | | | | | | | | | | | | | |
| S | M | T | W | T | F | S | | | | | | | | | | | | | | | | | | | | | | | | | | | | | | | | | | | | | | | | | | | | | | | | | | | | | | | | | | | | | | | | | | | | | | | | | | | | | | | | | | | | | | | | | | | |
| | | | 1 | 2 | 3 | 4 | 5 | | | | | | | | | | | | | | | | | | | | | | | | | | | | | | | | | | | | | | | | | | | | | | | | | | | | | | | | | | | | | | | | | | | | | | | | | | | | | | | | | | | | | | | | | | |
| 6 | 7 | 8 | 9 | 10 | 11 | 12 | | | | | | | | | | | | | | | | | | | | | | | | | | | | | | | | | | | | | | | | | | | | | | | | | | | | | | | | | | | | | | | | | | | | | | | | | | | | | | | | | | | | | | | | | | | |
| 13 | 14 | 15 | 16 | 17 | 18 | 19 | | | | | | | | | | | | | | | | | | | | | | | | | | | | | | | | | | | | | | | | | | | | | | | | | | | | | | | | | | | | | | | | | | | | | | | | | | | | | | | | | | | | | | | | | | | |
| 20 | 21 | 22 | 23 | 24 | 25 | 26 | | | | | | | | | | | | | | | | | | | | | | | | | | | | | | | | | | | | | | | | | | | | | | | | | | | | | | | | | | | | | | | | | | | | | | | | | | | | | | | | | | | | | | | | | | | |
| 27 | 28 | 29 | 30 | 31 | | | | | | | | | | | | | | | | | | | | | | | | | | | | | | | | | | | | | | | | | | | | | | | | | | | | | | | | | | | | | | | | | | | | | | | | | | | | | | | | | | | | | | | | | | | | | |



MARINA WEST Yacht Club 2011 CALENDAR

JANUARY

| | |
|---------|-----------------------------|
| 8 | Change of Watch |
| 9 | Board Brunch |
| 28 - 30 | Cruise in - Village West YC |
| 29 | PICYA Change of Watch |

FEBRUARY

| | |
|---------|--------------------------------------|
| 5 | Crab Feed |
| 6 | Superbowl Party |
| 11 - 14 | Oxbow, Driftwood YC & IOBG Cruise In |
| 12 | Wine & Chocolate Fest |
| 13 | IOBG New Member Induction (MWYC) |
| 18 | Board & General Meeting |
| 18 - 21 | SeaRay YC Cruise In |
| 26 | PICYA Leadership Conference |

MARCH

| | |
|---------|----------------------------------|
| 5 | Amtrack to Old Sac |
| 9 | Chamber Of Commerce Mixer |
| 11 - 13 | Cruise In - Delta Bayliners |
| 17 | St. Patrick's Day |
| 18 | Board & Gen Meeting |
| 18-20 | Cruise In - Sacramento Bayliners |

APRIL

| | |
|-------|--------------------------|
| 15 | Board & General Meeting |
| 16 | Opening Day on The Delta |
| 15-17 | Pittsburg YC Cruise In |
| 23 | Open House |
| 24 | Easter |
| 24 | Easter Egg Celebration |

MAY

| | |
|---------|--|
| 1 | Opening Day on the Bay |
| 8 | Mother's Day |
| 13 - 15 | Bridge Marina Cruise in |
| 20 - 22 | Cruise Out - Driftwood (Martini Crawl) |
| 21 | Board Meeting |
| 27 - 30 | Castaways Cruise In - "NASCAR races" |
| 30 | Memorial Day |

JUNE

| | |
|--------|--|
| 3-5 | Capital City YC Birthday Cruise In |
| 10 -12 | Delta Marina Cruise In (Confirmed) |
| 14 | Flag Day |
| 17 | Board & General Meeting |
| 18 | "Dock with the Ports" Cruise to Stockton |
| 19 | Father's Day |
| 24-27 | Solano YC Cruise In |

JULY

| | |
|---------|--|
| 1 - 4 | Independence Day Celebration - Cruise in available |
| 4 | Independence Day |
| 8 - 10 | Cruise Out to San Joaquin with Driftwood YC |
| 15 | Board & General Meeting |
| 16 | Taste of the Delta |
| 22 - 24 | Hidden Harbor YC Cruise In |
| 23 | Safety Day |
| 30 | Ladies Day |

AUGUST

| | |
|---------|--|
| 5 - 7 | Cruise In - Power Squadron (Caliente Aug Nights) |
| 12 - 14 | Devils Isle Cruise Out |
| 19 | Board & General Meeting |
| 20 | Tower Fest - MWYC Open House |
| 26-29 | Diablo YC Cruise In |

SEPTEMBER

| | |
|---------|--------------------------------------|
| 2 - 5 | Cruise In Available - Cowboy Weekend |
| 5 | Labor Day |
| 9 - 11 | Cruise out to PYC (Seafood Fest) |
| 16 | Board & General Meeting |
| 16 - 18 | Carver Club/IOBG Cruise In |
| 17 | Clam Bake |
| 18 | IOBG Business Meeting |
| 24 | Wheel Chair Regatta |
| 30 | Cruise In Available-Chili Cook-off |

OCTOBER

| | |
|---------|-------------------------------------|
| 1 | Make-A-Wish Cruise |
| 1 - 2 | Cruise In Available-Chili Cook-off |
| 7 - 16 | Down Bay Cruise |
| 15 | PICYA Management Conference |
| 21 | Board & General Meeting |
| 21 - 23 | Castaways Cruise In Halloween Party |
| 31 | Halloween |

NOVEMBER

| | |
|-------|---|
| 4 - 6 | Thanksgiving Trial Run- Cruise in Avail |
| 12 | Pasta Feed |
| 18 | Board & General Meeting |
| 24 | Thanksgiving |

DECEMBER

| | |
|----|-------------------------------|
| 3 | Delta Reflections |
| 4 | Delta Ref Awards Presentation |
| 10 | Tower Park YC Christmas party |
| 17 | Party |
| 25 | Christmas |
| 31 | MWYC New Years Eve Party |

The ANCHOR

MARINA WEST YACHT CLUB

**14900 W. Hwy. 12
At Tower Park
Lodi, CA**

**Phone: 209-477-7653
www.MWYC.org**



**We're on the Web
@
www.mwyc.org**

